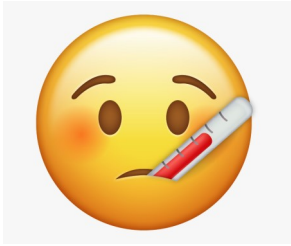


## Sickness

If your child is unwell during the day a member of staff may ring to inform you or ask you to collect the child if we feel it is necessary. If your child is ill before the start of school it is always a good idea to keep them off and let us know at the office.



For Health and Safety reasons we should not administer medicines in school. Just occasionally this may be possible. So if your children need medication for a few days then please see a member of staff to sign a consent slip.

Children on daily, long term medication (usually asthmatics) are given them when required - again a permission slip needs to be signed.

Accidents do happen, but obviously we do all we can to protect all in our school. We usually have a word with parents at the end of the day if there has been an incident. All accidents are recorded in the school accident book.



## Water Bottles

Water bottles are allowed in school but they must only contain water. No juice or other drinks please.

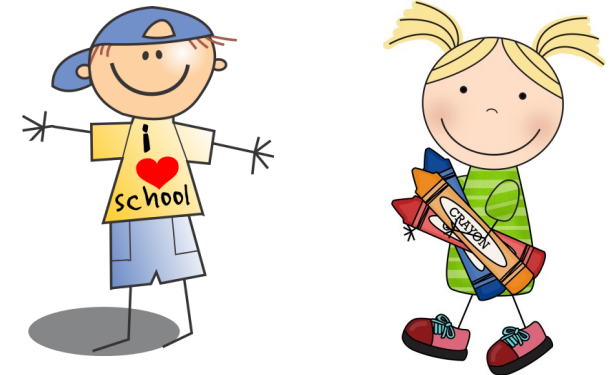
When you come in you can put your water bottle on your table. Remember to take it home each day to clean it and keep it fresh.

## Reading

It is extremely important for your child to be reading their reading book at home. We ask that your child brings their book bag or packet to school on **Mondays and Thursdays**. We will then change their book on these days. This does **NOT** mean that your child should only be reading on Monday and Thursday. They should read their book every-day. Please sign your child's reading book **every time they read**.

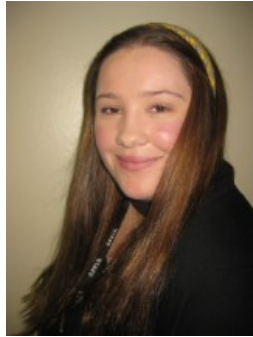


# Welcome to Year 2!

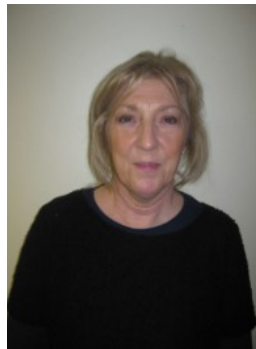


## Introduction

Hello and welcome to Year 2.



I am Miss. Taylor, Year 2's class teacher.



This is Mr. Coward and Mrs Berry, our teaching assistants.

We are really looking forward to the new school year and to getting to know you and your children. Children enter through the doors to our classroom on the KS1 playground,

## Uniform

We encourage all children to wear the school uniform. It helps to give a sense of belonging and pride. Many items can be obtained from the school office or the 'Topform Uniform' Shop.

**Please remember to label uniform with your child's name so it can be returned easily if it gets lost**

- School jumper
- Dark grey / black trousers or skirt
- White shirt or polo t shirt
- Black school shoes
- School tie

## PE

Year 2 have PE on a Monday afternoon. Children should come to school wearing their PE kits.

The PE kit that is required for Year 2 consists of the following:

- Black slip on pumps/ trainers
- Black shorts, bottoms or leggings
- White t shirt

Please note for Health and Safety reasons children should not wear jewellery especially earrings in school. As a result pupils are not allowed to wear earrings for PE and parents/carers are asked to remove them on the morning of PE days.

**School Telephone Number:  
01706 640728**

## Playtime



In Year 2 we continue to use the KS1 playground.

For playtimes please remember to send your child to school in a coat with a hood every day unless it is an exceptionally hot day. If very hot, please put sun cream on your child and send with a sunhat/cap.

## Times

- School doors open: 8.40am
- School doors close: 8.50am
- School Day ends: 3.00pm



If your child arrives late please go to the main school office to sign your child into school as the register will have closed.

**Please ring in advance if somebody different is picking your child up from school. For the safety of your child we may not let an unknown person collect your child until we have confirmed this with you.**